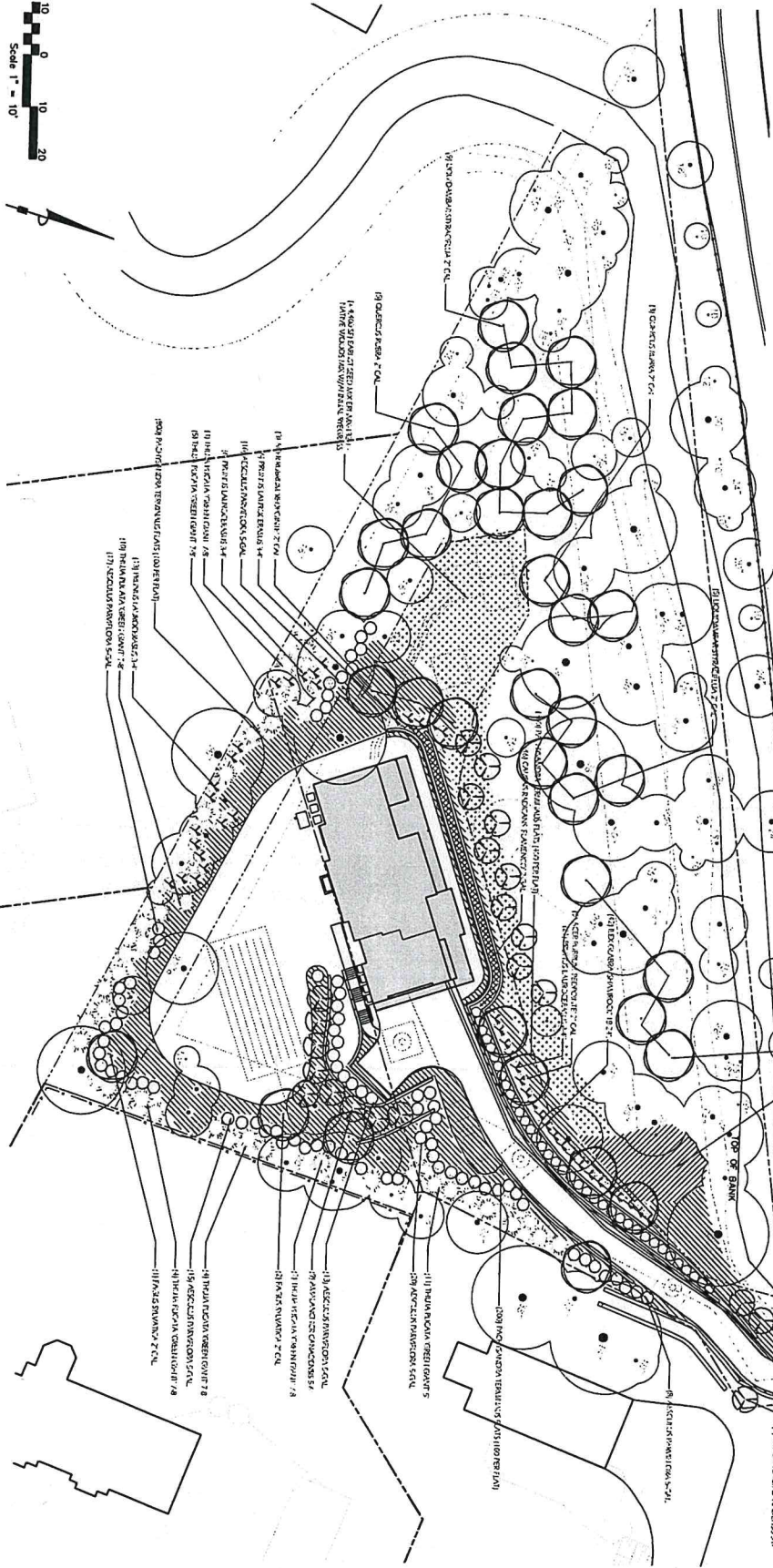


Qty	Latin Name	Common Name	Size	Comments
Deciduous and Flowering Trees:				
22	Azalea	Shadeberry	6-8'	Container, Symmetrical
8	Acacia saligna	Red Maple	2" Cal.	Container, Symmetrical
14	Hydrangea	Sweetgum	2" Cal.	Container, Symmetrical
12	Quercus	Red Oak	2" Cal.	Container, Symmetrical
3	Ficus	Empress Beech	2" Cal.	Container, Symmetrical
Evergreen Trees:				
11	Thuja	Green Giant	15'	Container, Symmetrical
29	Thuja	Green Giant	7-8'	Container, Symmetrical
Shrub, Grasses:				
83	Aspidistra	Bordeaux Boxwood	5-Gal.	Herb, Symm
46	Prunella	Cherry Laurel	1-Gal.	Herb, Symm
42	Hosta	Hosta Holly	18-24"	Herb, Symm
Groundcover, Perennials, Sedges:				
1200	Stachys	Japanese Spurge	100 Per Bag	Widely used plants
46	Coryth	Japanese Thimble	1-Gal.	Widely used plants

Size of Tree To Be Replaced	Number of Trees To Be Replaced	Number of Trees Replaced Per Species	Total Replacements (Total Per Species)
12"	1	1	1
15"	2	2	2
18"	3	3	3
21"	3	3	3
22"	1	1	1
24"	1	1	1
27"	3	3	3
30"	1	1	1
36"	2	2	2
42"	1	1	1
TOTAL	25	25	25

TOTAL DECIDUOUS, EVERGREEN, AND ORNAMENTAL TREES TO BE PLANTED PER THE PLAN IS EQUAL TO 99



NOT FOR CONSTRUCTION

[Signature]
 Benjamin Ross Hiler
 Registered Landscape Architect
 LA# 010003

landscape plan
 PAGE 1 OF 1
 DRAWN BY: BRH
 CHECKED BY: PK
 REVISION:

AHMAD RESIDENCE
 20 Pleasant Avenue
 Upper Saddle River 07458
 Block 1306, Lot 1.03
 Date: 3.29.22

HK Ia
 LANDSCAPE ARCHITECTURE
 PROJECT MANAGEMENT
 201 Park 525
 Suite 410/110
 R. 207, 208, 1080
 Rte 207, Upper Saddle River
 NJ 07075-3200

This document is the exclusive property of HK Ia. It is not to be reproduced, stored in a retrieval system, or transmitted in any form or by any means, electronic, mechanical, photocopying, recording, or by any information storage and retrieval system, without the prior written consent of HK Ia, LLC.
 © 2022 HK Ia. All Rights Reserved. HK Ia, LLC