

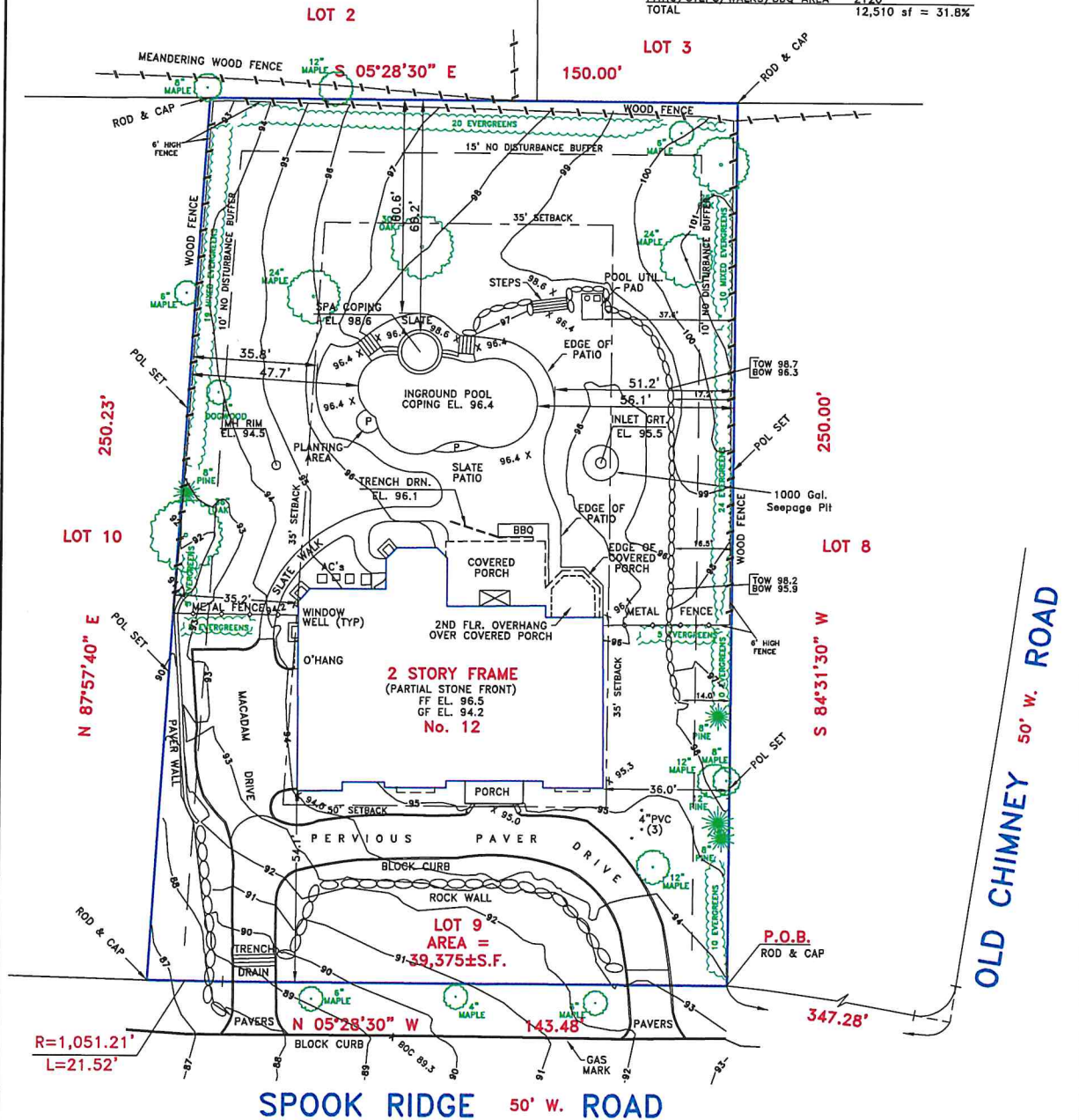
# Lantelme, Kurens & Associates, PC

Engineers & Surveyors 101 West Street, Hillsdale, N.J. 07642 Ph. 201-666-2450 Fax 201-666-9745


FILE MAP No. 4522

LOT COVERAGE CALCULATIONS	
DWELLING	5113 sf
COVERED PATIO	478
<b>TOTAL</b>	<b>5591 sf = 14.2%</b>
AC's	24
PAVER DRIVEWAY	2194 @ 100%
MACADAM DRIVEWAY	1285
POOL/SPA/COPING	1220
POOL UTIL. PAD	43
STEPS	33
PATIO/STEPS/WALKS/BBQ AREA	2120
<b>TOTAL</b>	<b>12,510 sf = 31.8%</b>

## BLOCK 510



THIS SURVEY IS SUBJECT TO ANY FACTS THAT MAY BE DISCLOSED BY A FULL AND ACCURATE TITLE SEARCH.

<b>AS-BUILT SURVEY</b>		CERTIFIED TO: ROBERT RODRIGUEZ	
PROPERTY SITUATED IN: BOROUGH OF UPPER SADDLE RIVER, BERGEN COUNTY, NEW JERSEY			
LOT NO.: 9 (TAX & F.M.)			
BLOCK NO.: D (FILE MAP)		BLOCK NO.: 510 (TAX MAP)	
MAP SOURCE: "SUBDIVISION PLAT, SECTION No. 1, OLD CHIMNEY RIDGE, BOROUGH OF UPPER SADDLE RIVER, BERGEN COUNTY, N.J." FILED IN THE BERGEN COUNTY CLERK'S OFFICE SEPTEMBER 16, 1953 AS MAP No. 4522.			
SCALE: 1" = 30'		DATE: 2/2/21	
PARTY: EW/DC		DRAWN BY: JL	
NO. I2SPOOKAB		 Christopher J. Lantelme, P.E. & L.S. 39580 LAND SURVEYOR	

REVISED-11/19/21 FENCES, SETBACKS, ELEV'S, PLANTINGS  
 REVISED-10/22/21- COV. CALC.  
 REVISED-2/2/21-PERVIOUS PAVERS, COV. CALC.