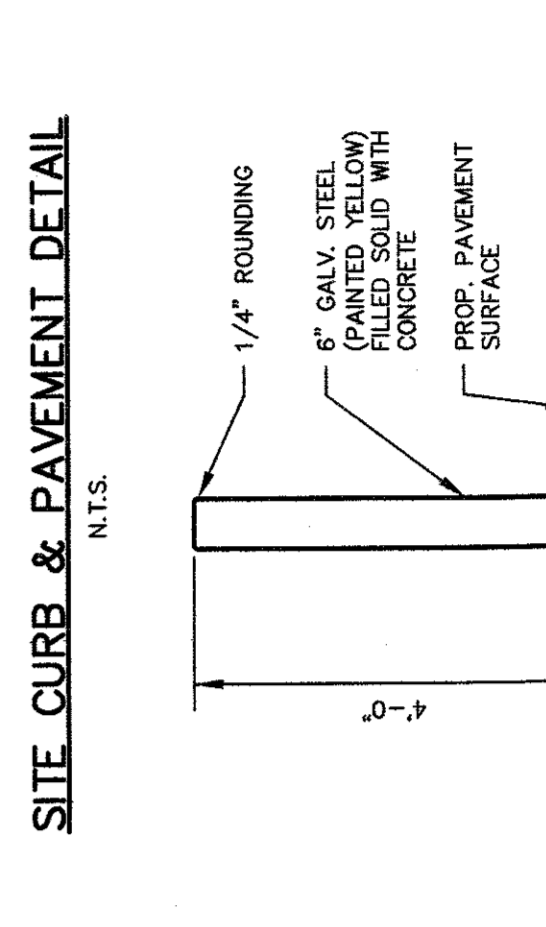
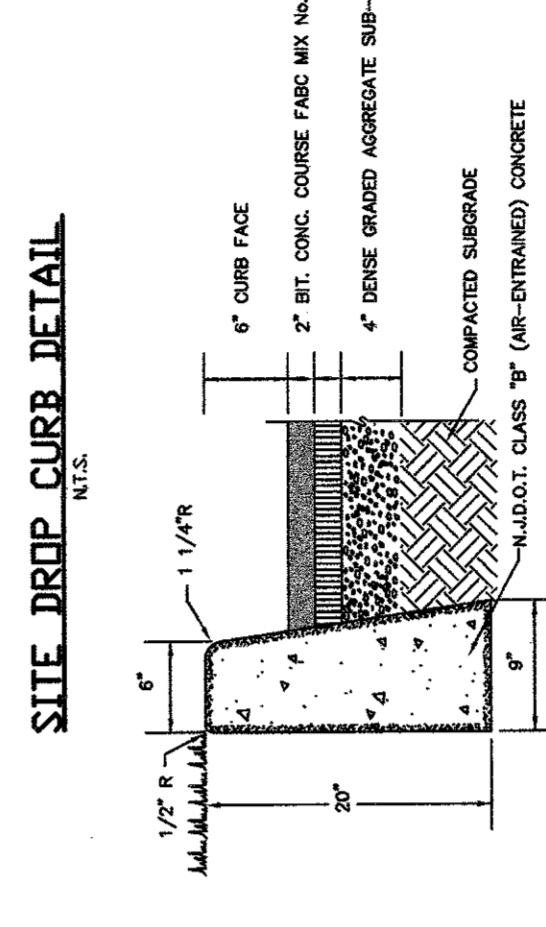
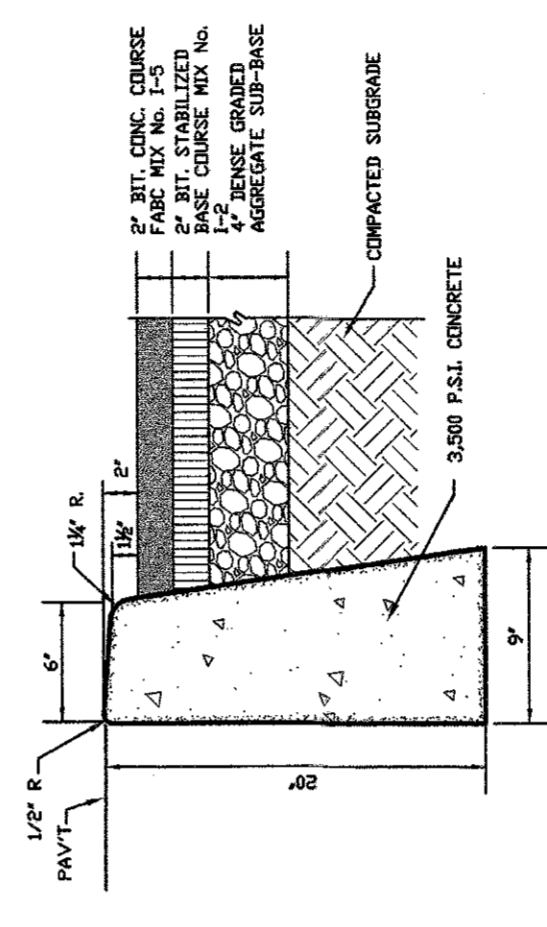
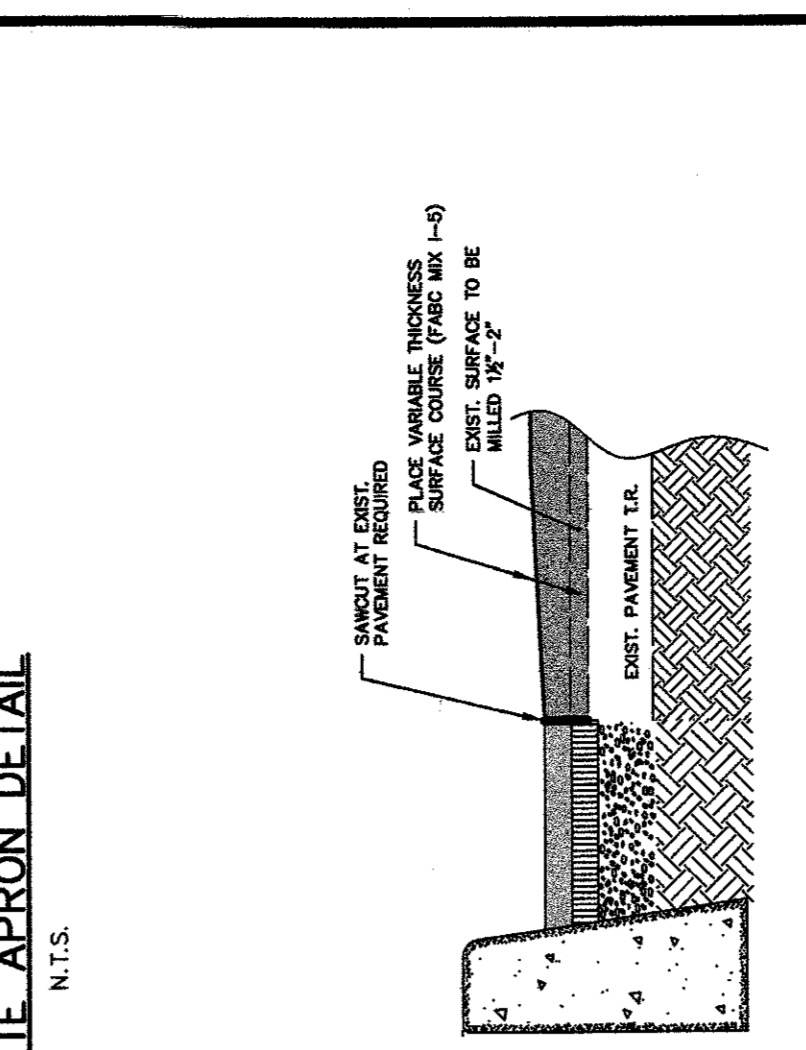
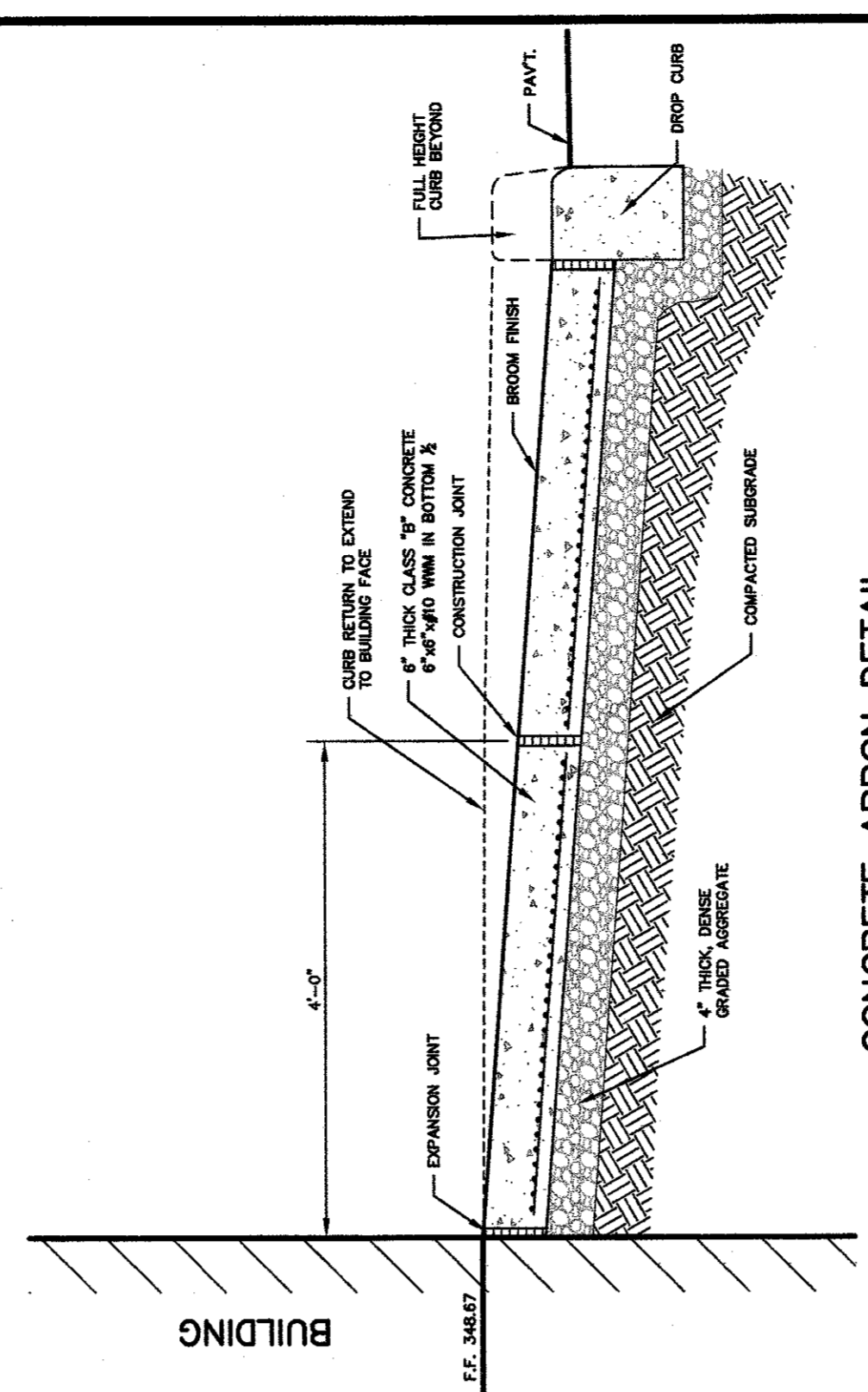
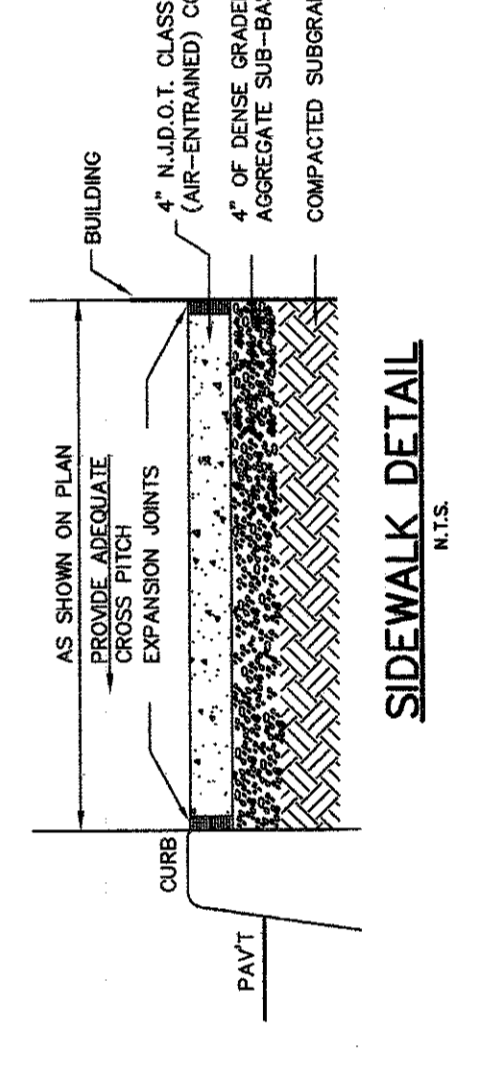
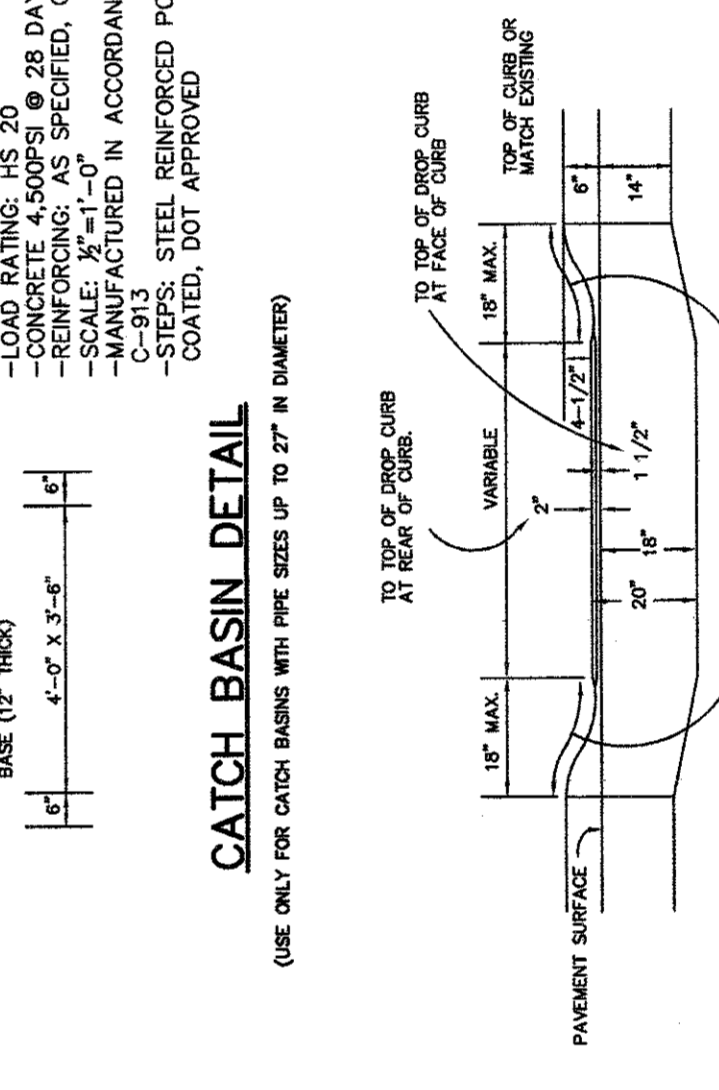
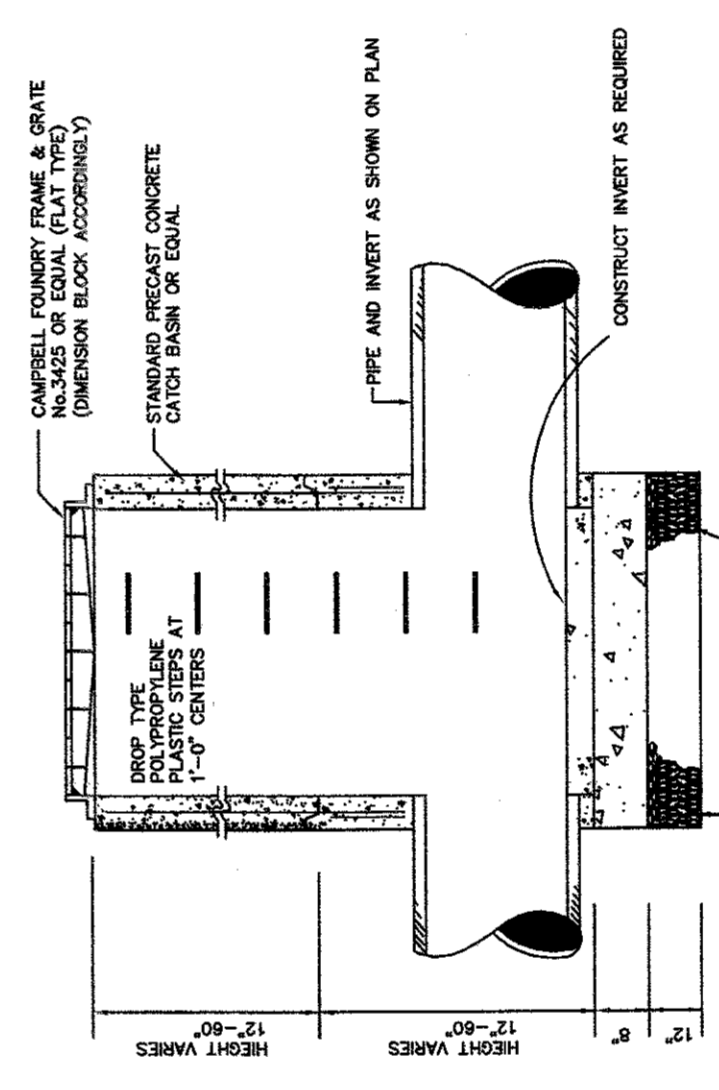
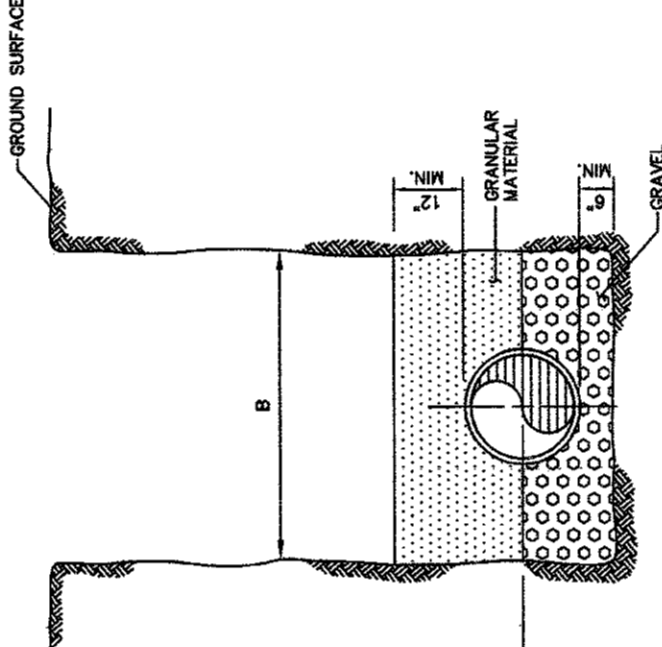


PIPE SIZE	MINIMUM WIDTH OF TRENCH AT A POINT 12" ABOVE TOP OF PIPE
8"	24"
10"	30"
12"	36"
15"	45"
18"	54"
21"	63"
24"	72"
27"	81"
30"	90"
36"	108"
42"	126"
48"	144"
54"	162"
60"	180"
66"	198"
72"	216"
78"	234"
84"	252"
90"	270"
96"	288"
102"	306"
108"	324"
114"	342"
120"	360"
126"	378"
132"	396"
138"	414"
144"	432"
150"	450"
156"	468"
162"	486"
168"	504"
174"	522"
180"	540"
186"	558"
192"	576"
198"	594"
204"	612"
210"	630"
216"	648"
222"	666"
228"	684"
234"	702"
240"	720"
246"	738"
252"	756"
258"	774"
264"	792"
270"	810"
276"	828"
282"	846"
288"	864"
294"	882"
300"	900"



AREA MAP/NOTES/CONSTRUCTION DETAILS

DATE: _____ REVISION: _____ BY: _____

FOR
JACK DANIELS PORSCHÉ
BLOCK 1015
335 ROUTE 17 SOUTH
UPPER SADDLE RIVER, BERGEN COUNTY, LOT 7, NEW JERSEY

LAPATKA ASSOCIATES, INC.
12 ROUTE 17 NORTH, SUITE 230
PARLIN, NEW JERSEY 07652
(201) 307-1000
ENGINERS LANDSCAPE ARCHITECTS - SURVEYORS

ALEXANDER J. LAPATKA JEFFREY H. KLEINE
P.E. 28218 L.S. 35848
PROFESSIONAL ENGINEER PROFESSIONAL LAND SURVEYOR

DRAWN: _____ CHECKED: _____ SCALE: AS SHOWN DATE: 2-21-20 SHEET NO. 3 OF 3 PROJECT NO. 07-130 L.K.